

**Disclaimer : All Photographs used in this presentation are actual with no cosmetic editing and formatting.
The information contained in this presentation is true and accurate to the best of our knowledge.**

We Provide Complete Bulk Material Handling Solutions

*Formerly known as
ROLLWELL Conveyor Components Pvt. Ltd.*



ROLLWELL
CONVEYOR PRIVATE LIMITED

Conveying Performance



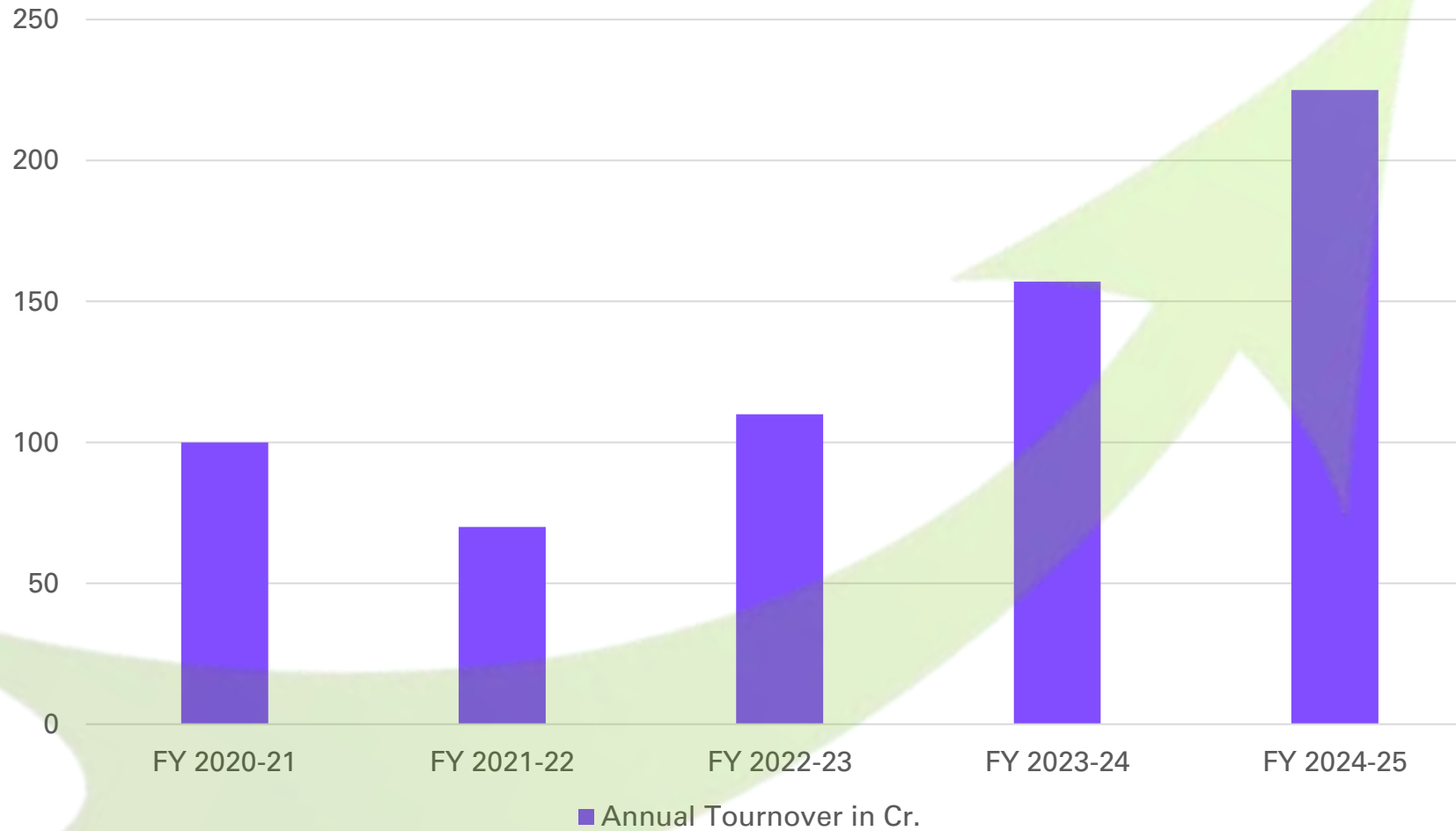
CE CE mark Approved

About us...

- **Industry Expertise:** ISO 9001:2008 certified manufacturer with over 35 years of experience in Bulk Material Handling solutions.
- **Comprehensive Product Range:** Specializing in Rollers, Idlers, Pulleys, Belt Conveyors, Pipe Conveyors, Shuttle Conveyors, Powered Roller Conveyors & High Angle Conveyors.
- **Robust Production Capacity:**
 - ❖ 2,000 Roller/Idler sets and 30 Pulleys manufactured daily.
 - ❖ ~22 conveyors produced per month.
 - ❖ 250–400 metric tons of conveyor fabrication completed monthly.
- **Global Reach:** Supplying to markets across the Middle East, Africa, Europe, North & South America, and Australia.
- **Commitment to Growth:** Continuously expanding capabilities and embracing new challenges to drive innovation and excellence



Our Perpetual Growth



Exporting Across the Globe

- USA
- Canada
- Brazil
- Senegal
- Africa
- Nepal
- Mozambique



- Middle East
- Oman
- Bangladesh
- Sri Lanka
- Australia
- Egypt



PULLEYS

IS 8531-1986

DESCRIPTION	GRADE	MATERIAL
1. 1/2" (38mm) 100T	100T	100T
2. 1 1/4" (32mm) 150T	150T	150T
3. 1 1/2" (38mm) 200T	200T	200T
4. 1 3/4" (45mm) 250T	250T	250T
5. 2" (51mm) 300T	300T	300T
6. 2 1/4" (63mm) 400T	400T	400T
7. 2 1/2" (64mm) 500T	500T	500T
8. 3" (76mm) 600T	600T	600T
9. 3 1/2" (89mm) 800T	800T	800T
10. 4" (102mm) 1000T	1000T	1000T

TESTING FACILITIES

- Stress Relieving
- Dye Penetration Test
- Hardness Test
- Static Balancing
- QT Lamination Test
- Ultrasonic Test
- Chemical & Mechanical Test

IDLERS

IS 8598-1967

TYPE OF SHAFTHUB FITTING ARRANGEMENTS

- Standard Key Arrangement
- Target Lock Arrangement
- Key Pin Arrangement
- Heavy Key and shaftpin type with Key Pin

TESTING FACILITIES

- Stress Relieving
- Dye Penetration Test
- Hardness Test
- Static Balancing
- QT Lamination Test
- Ultrasonic Test
- Chemical & Mechanical Test

CERTIFICATE OF NOMINATION

Presented to

Rollwell Conveyor Pvt. Ltd.

For successfully being part of Nomination Phase at

INDIA 5000 BEST MSME AWARDS

2023

Organized by **BENCHMARK TRUST**

Knowledge Partner **TQV**

Supporting Partner **BSE SME**

www.india5000.com

INDIA 5000 BEST MSME AWARDS

for Quality excellence

GLOBAL ACHIEVERS' AWARD

2021 India's Most Coveted Award
Recognising Achievements Since 2000

presented to

Avinash Goyal
Managing Director
ROLLWELL CONVEYOR PVT. LTD.

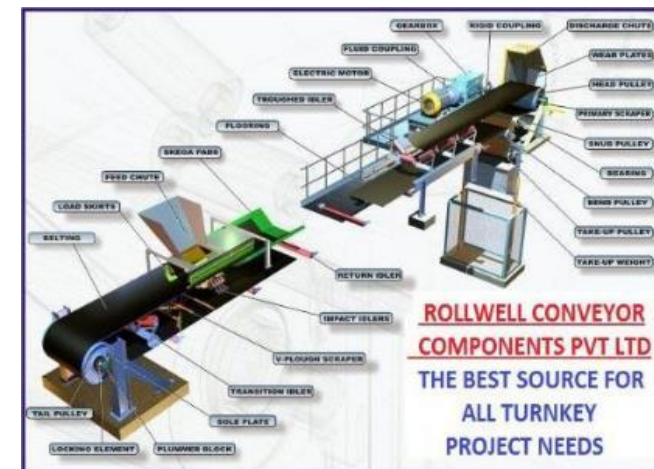
In Recognition of Outstanding Professional Achievement & Contribution in Nation Building

Harish Chandra
President

S. Ravi Shankar
Hon. Secretary

INDIAN ACHIEVERS' FORUM
Promoting Achievements which Inspire Businesses & Communities

iafindia.com



SKOCH GROUP

SEMI-FINALIST
SKOCH ORDER OF MERIT

This is to certify that

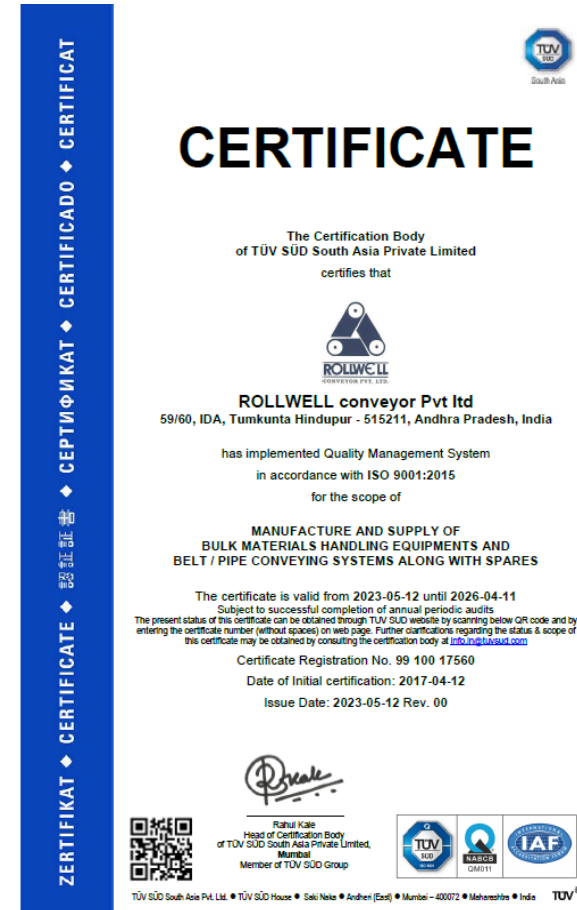
Rollwell Conveyor Private Limited

has qualified the Semi-Finals of SKOCH Award 2020

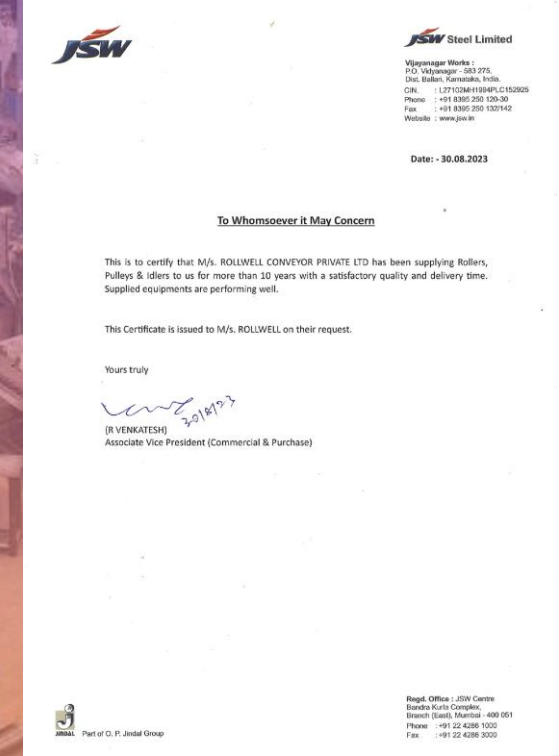
Sameer Kochhar
Sameer Kochhar, Chairman, SKOCH Group
20th June 2020



Accreditation & Certifications



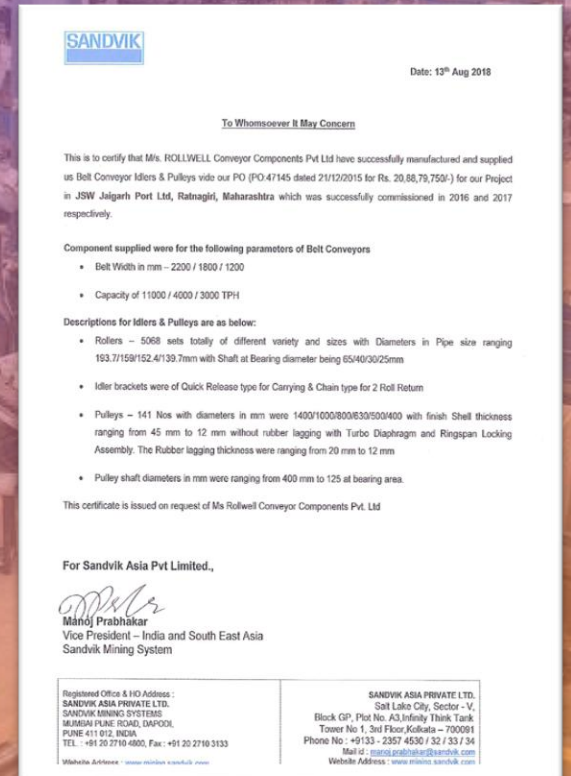
Accreditation & Certifications



ROLLWELL has supplied to almost all sectors and major industries in the country and also exports to several countries globally. ROLLWELL follows good business practices not only with its customers, but also with its all suppliers with regular volume orders and prompt & immediate payments for supplies.



Accreditation & Certifications



ROLLWELL has supplied to almost all sectors and major industries in the country and also exports to several countries globally. ROLLWELL follows good business practices not only with its customers, but also with its all suppliers with regular volume orders and prompt & immediate payments for supplies.



Major Clients



TATA STEEL



AM/NS INDIA



Major Clients



Port of Fujairah



United Arab Emirates



Major Suppliers



Live Pictures of Our Workshop – Roller Division



ROLLER Manufacturing – All operations on CNC Machines to ensure consistency and quality



Live Pictures of Our Workshop – Roller Division



Live Pictures of Our Workshop – Pulley Division



Live Pictures of Our Workshop – Frames Division

We make 400 frames per day with robotic welding.



Live Pictures of Our Workshop – Frmes Division



Special Idler Frames



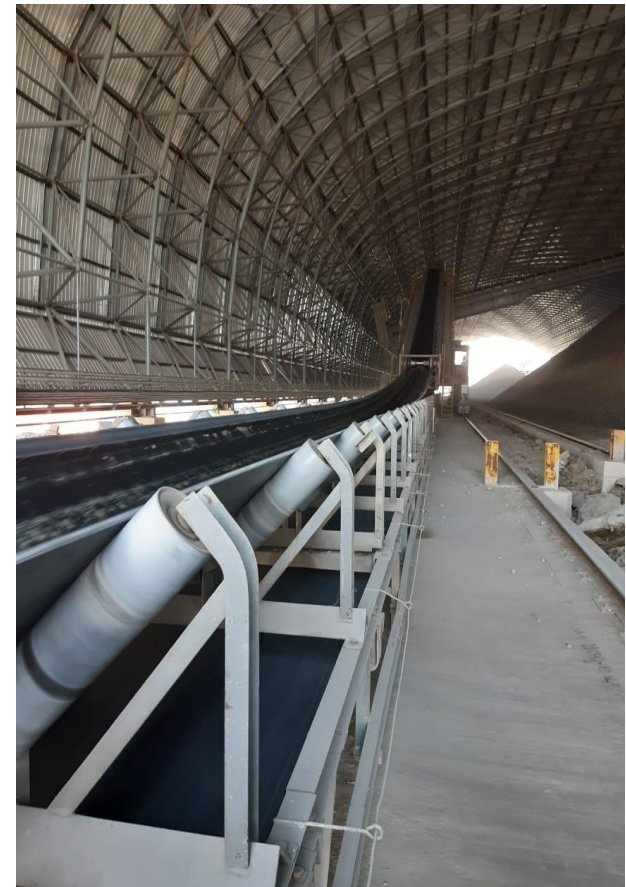
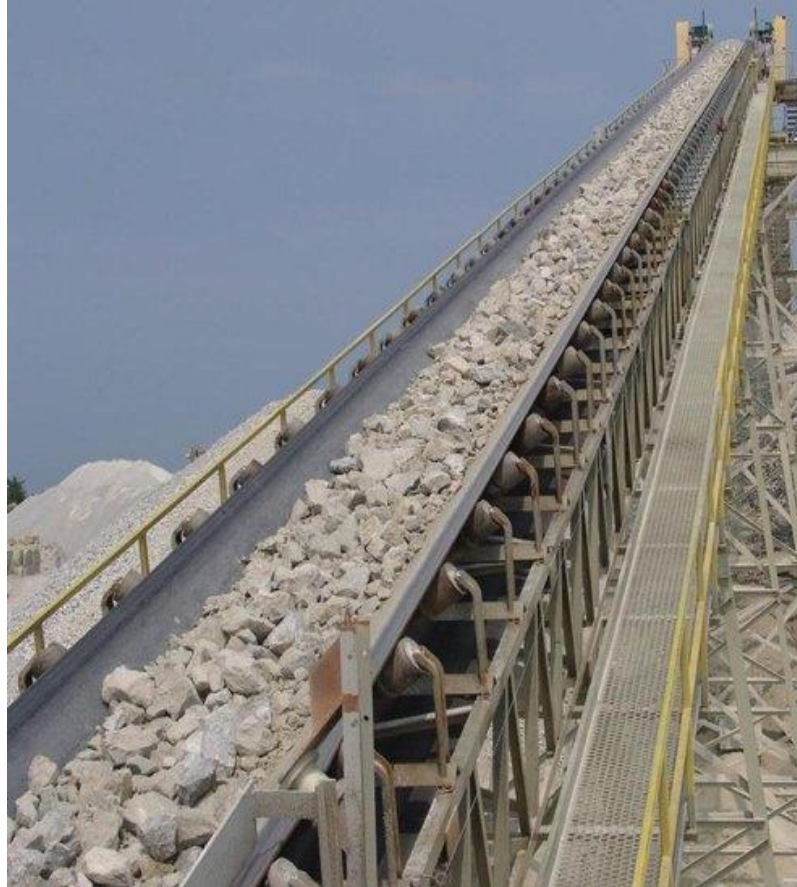
Standard idler base frames – Mass production on ROBOTIC Welding Machines



Live Pictures of Our Workshop – Conveyor Division



Belt Conveyors



Pipe Conveyors



The Pipe Conveyor is an enclosed curve forming to a shape of a pipe and carrying bulk materials at high speed with zero spillage. At the loading and discharging points, the conveyor system is same as open troughed conveyors.



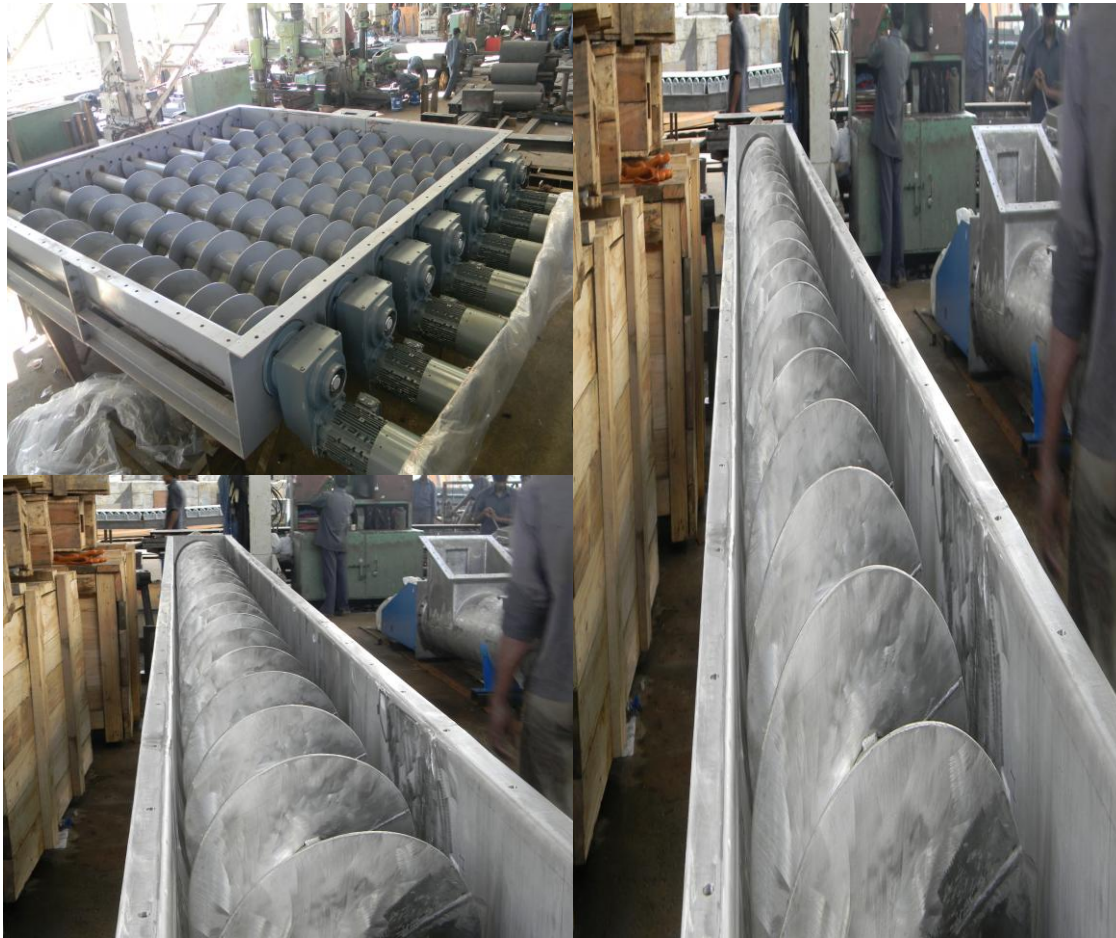
Powered Roller Conveyor



High Angle Conveyor



Screw Conveyor



We also specialize in :



Truck Loading Conveyors & Truck Loading Machines

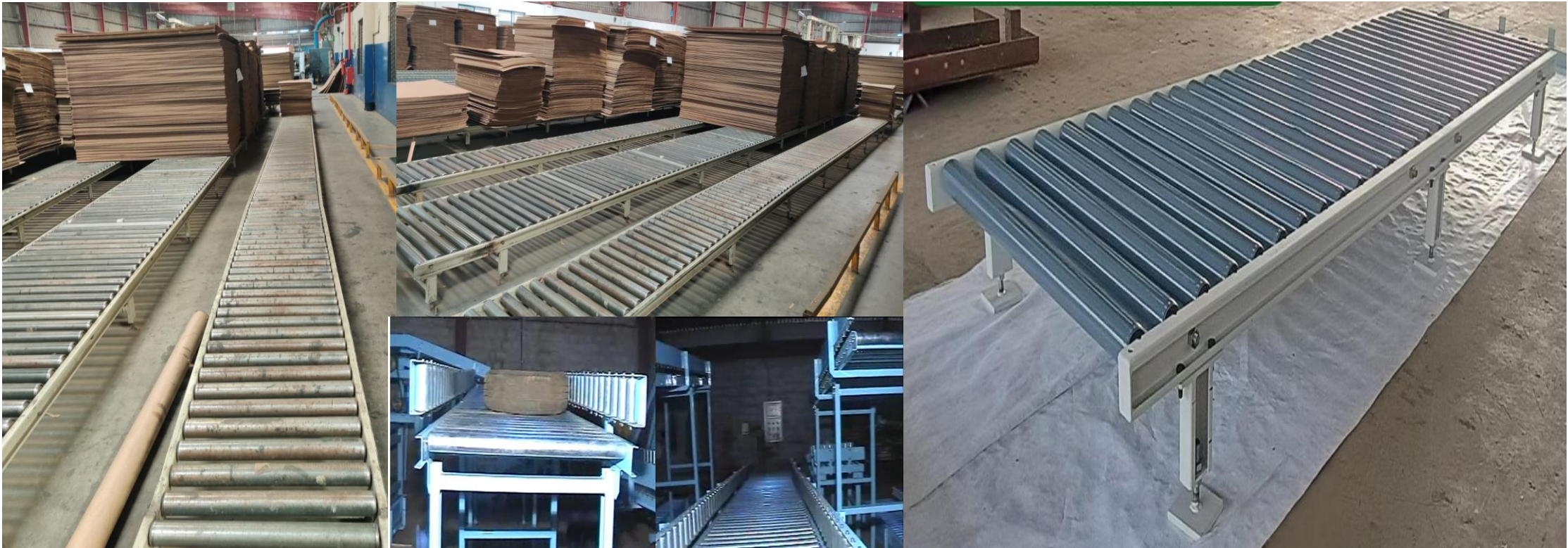


Tripper Conveyors & Shuttle Conveyors



We also specialize in : **Gravity ROLLER CONVEYORS**

Gravity roller conveyors are some of the most used types of conveyors in factories and other industrial settings. They offer a simple, reliable, and inexpensive solution to transporting parts, products, and packages.



Conveyor Idler Rollers – 2000 Nos per Day



We have been renowned across the country with our customers for our quality painting and packing, apart from state of art engineering in roller manufacturing. Rollers are specially engineered to work under dusty environment, rainy season, high impact loads etc. The roller design and sealing system is best among and are guaranteed for 50000 hrs.



We Also Make Polymer Idler Rollers



Impact Idlers / Spiral Rollers



Conveyor Pulleys – upto 30 Nos per day



Turbo Diapharm Pulleys



Deflector Pulleys for Flexowell Conveyor



Varieties of Pulleys



Pulley lagged with Ceramic Tiles



Special Pulleys for Export



Varieties of Pulleys



Belt Hoods



HiPer Rollers – High Performance Rollers

“Better than the Best”



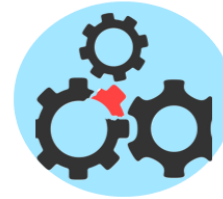
Life Cycle

Increased life minimum by 30%, as compared with existing rollers.



Cost Effective

One time investment, which will result in reducing the opex. cost.



Minimal Breakdown

Less breakdown time, as compared to existing rollers.



Low Maintenance

Hassel free work, will help to get more out put & reduced maintenance cost.



High Speed/High Capacity

Designed for high-speed conveyor and to carry capacity of 1000TPH & above.



Price

Price will be 12-20% higher, as compared to existing rollers.



Stringers / Short Posts / Deck Plates / Skirts / Chutes / Hand Rails/Side Guard / Other Conveyor Fabrication



Monthly Production Capacity

Items	Monthly Production Capacity	UOM
Rollers	50000	Nos.
Pulleys	250	Nos.
Fabrication	400	MT.
Idler Frames	10000	Nos.
Complete Conveyors	20	Nos.





Works & Registered Office:

#59 & 60, IDA, Tumkunta,
Hindupur - 515211, Andhra Pradesh, India

Corporate Office

204, Brigade Rubix, Plot No. 20, HMT Road, Off
Tumkur Road, Near BFW, Bangalore - 560 013.
Ph : +91-80-4127 2838.

Website : www.rollwell.net
E-Mail : mktg@rollwell.net, info@rollwell.net

Mr. Avinash Goyal – Managing Director : +91-93793
72704, +91-63639 77797

Export Inquires : - +91-93793 72704, +91-63639 77797
Domestic Inquires : - +91- 83681 40395, +91-93203 09597,
+91-99116 86889 & +91-7768899003

Thank You.

